

+44 (0)1273 513566



## Soap dispensers

Solid, reliable & stylish wall mounted soap dispensers

The Modular range includes three wall mounted soap dispensers of different sizes, 400ml, 900ml and the industrial 2L. Highly versatile, they are made of the same unique mechanism as they come with a variety of interchangeable pumps and containers, reducing distribution constraints and enabling easy upgrading from one product to the other. This specificity also allows any type of chemicals to be dispensed from a refillable container or a disposable pouch, allowing greater flexibility in terms of chemical selection.

Pumps & containers are also interchangeable with the Mercury soap dispenser.

The Modular wall mounted soap dispensers come with a blue window by default. However, a set of coloured windows and branding options enable full product customisation to match a company's brand. These features are available for the entire Modular range.

### Pumps and Containers

Choose the right soap dispenser for your needs

#### Step 1: the pump

##### Type of chemical

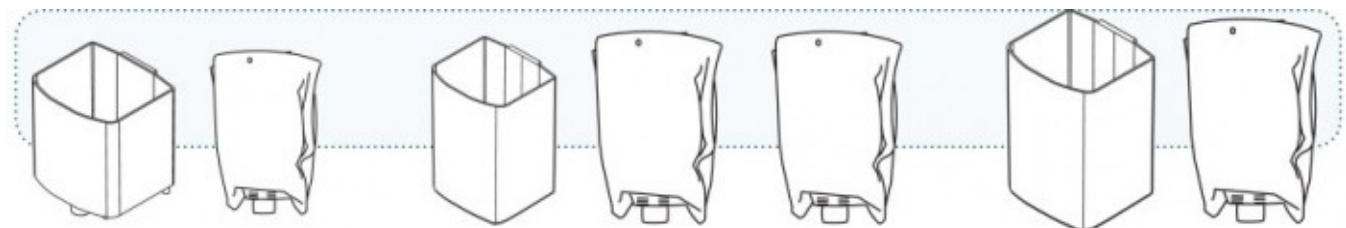
Foam soap, liquid, spray, cream, disinfectant, beaded hand gel - there is a soap dispenser pump for any type of chemical.



#### Step 2: the container & the size

##### Usage

Three sizes of soap dispensers and various containers are available to match all kinds of usage and all levels of hygiene. Mix and match pumps and containers to fit your needs.



#### You have not found what you are looking for?

Ask us about our disposable bottles or enquire about a bespoke design.

## Features

- Multipurpose, modular system: mix and match pumps & containers
- Suitable for most soaps and lotions on the market (click for image)
- Fully disposable pump and pouch system available for further hygiene demanding places such as hospitals (click for image)
- Available in three sizes: small, standard, large, to fit the space and usage level of all environment (click for image)
- Large front window to check stock levels
- Robust ABS plastic
- Choice of window colours (click for image)
- Branding available (click for image)
- Can be exclusive to your chemicals with the option of exclusive pin positions (click for image)

## Technical Specifications

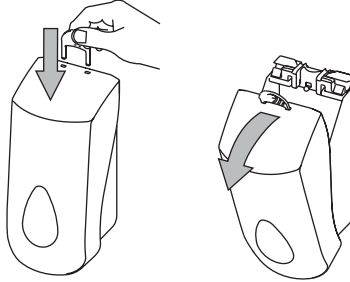
Variants	Dimensions (mm) (H x W x D)	Weight	Material	Capacity	Liquid pump	Spray pump
Small	190 x 90 x 98	0.3kg	ABS cover and window, glass filled polypropylene backplate	disposable pouch 375ml refillable reservoir 400ml	2ml	0.5ml
Standard	250x 115 x 115	0.6kg	ABS cover and window, glass filled polypropylene backplate	disposable pouch 800ml refillable reservoir 900ml institutional pouch 800ml	2ml	0.5ml
Large/industrial	310 x 140 x 145	0.85kg	ABS cover and window, glass filled polypropylene backplate	disposable pouch 1.8L refillable reservoir 2L		

Foam pump	Institutional pump	Industrial pumps	Max branding (mm) (H xW)	Box size (mm) (H x W x D)	Carton qty	Pallet qty
20ml foam (0.6ml liquid)			40 x 45	20 x 10 x 12	60	600
20ml foam (0.6ml liquid)	1ml		60 x 65	25 x 12 x 11	40	320
		2ml - liquid soap 3ml - beaded non-solvent 3ml - beaded solvent 3ml - pumice	100 x 100	28 x 15 x 15	18	144

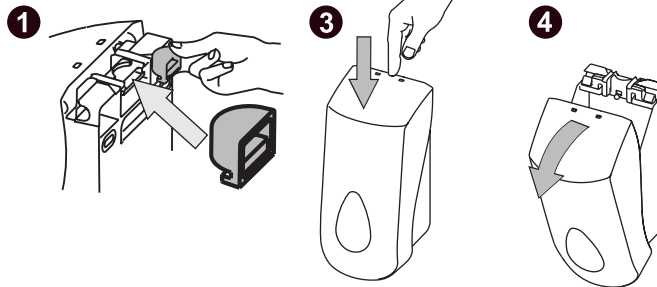
Installation Instructions

Modular  
S  
oap  
D  
ispenser

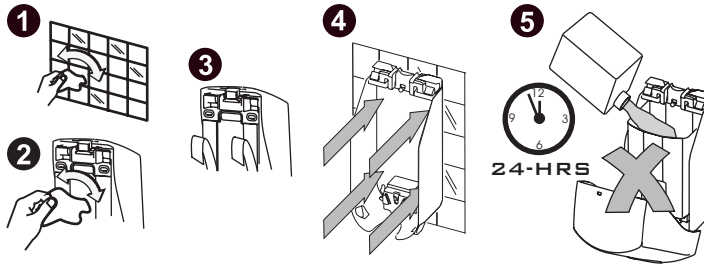
1A



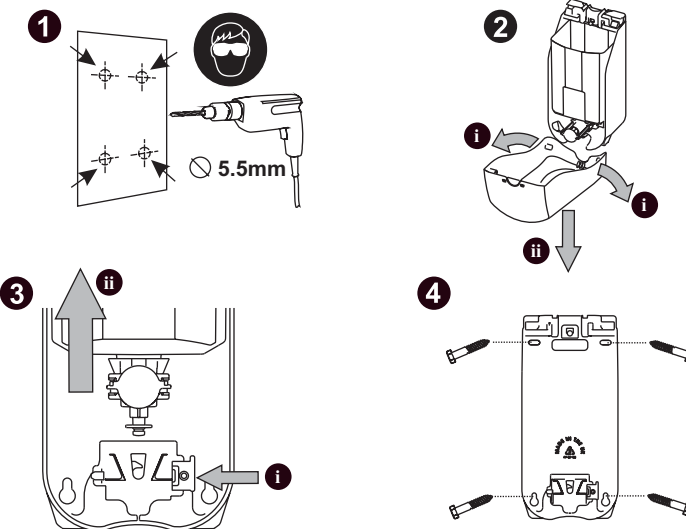
1B

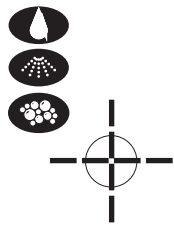


2A



2B





User Instructions



Modular  
Soap  
Dispenser

